



# BANNER BOSWELL MEDICAL CENTER SUN CITY, ARIZONA

Healthcare Industry  
CASE STUDY



CREATING ENVIRONMENTS THAT SHAPE THE FUTURE



**Location**

Sun City, AZ

**Client**

McCarthy Builders, HMC Architects

**Completed**

2021

**Total Contract**

\$10.5MM

**Details**

322,000 square feet (new tower)

6 stories

429 beds

2,578 employees

**Scope**

Drywall

EIFS

Exterior Panels

Framing

Paint

Prefabricated Patient Headwalls

“This fast-tracked Emergency Department completion wouldn’t have been possible without the project team successfully employing its collaborative Integrated Project Delivery (IPD) construction method and utilizing large-scale prefabrication. We knew it was critical for Banner Boswell to open early and in time for the busy fall and winter season, and we’re thrilled to meet that goal.”



## PROJECT OVERVIEW

The project at Banner Boswell Medical Center in Sun City, Arizona was part of a multi-million dollar expansion to the existing hospital facility, including a new emergency department and patient tower.

The medical facility had not undergone this large of a renovation in 30 years. The new ED increased capacity from 42 to 56 beds, allowing the department to care for up to 60,000 ED patients annually, representing a 25% increase. Construction of the six-story, 322,000-square-foot patient tower began in 2019 and was completed in 2021.

The tower's first floor opened in late 2020 and contains the main lobby, gift shop, retail pharmacy, admitting desk and chapel. The five floors above the main lobby are designed as connecting shelled spaces, reserved for future inpatient rooms.

### THE BERG DIFFERENCE

**“We are thrilled about the extra capacity that will serve the growing needs of the community for generations to come. This new ED and patient tower lobby will truly transform our Boswell campus and create a welcoming experience given the new entrance”**

**Pictured right:** To help Banner Boswell visualize what the end product would look like, The Berg Group constructed a to-scale mockup of the patient tower.



### BRING IT. BUILD IT. OWN IT. SHARE IT.

One of the innovative cost-and-time-saving measures deployed on the Banner Boswell project involved the use of prefabricated interior and exterior wall panels. The panels were constructed offsite by manufacturing partner, Offsite Integrated Solutions, and installed by The Berg Group crew. Stone veneer was also installed at the ground level prior to placing on a support frame. This frame was then hoisted into place, securing the exterior wall system to the steel structure. This process saved approximately three months of construction time.

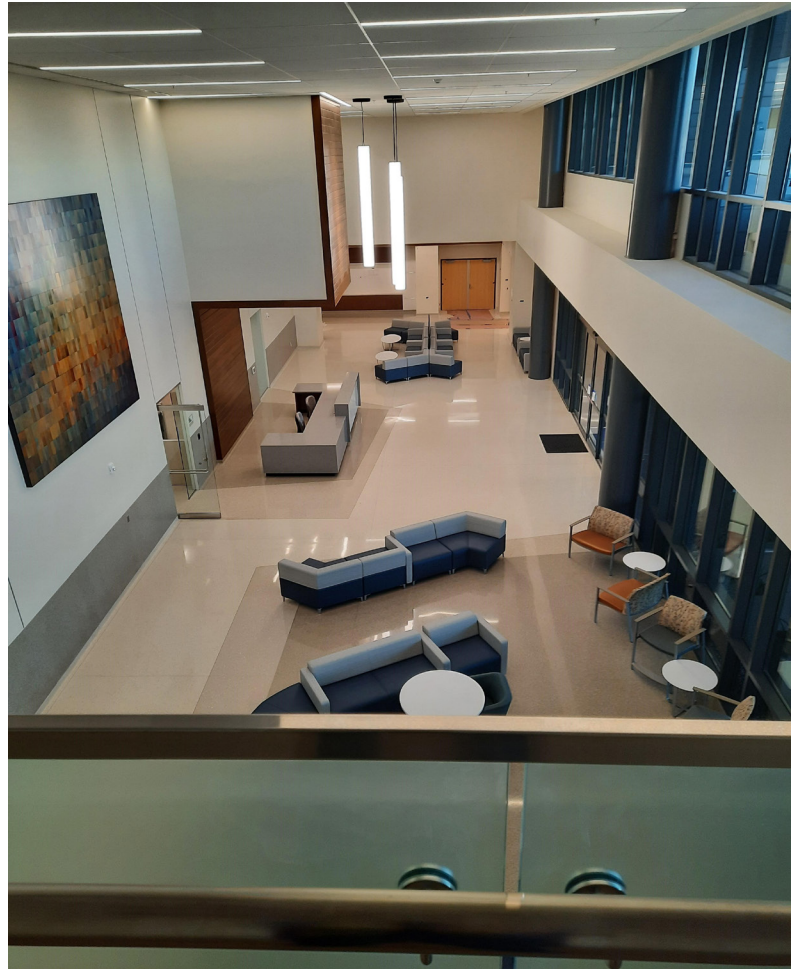
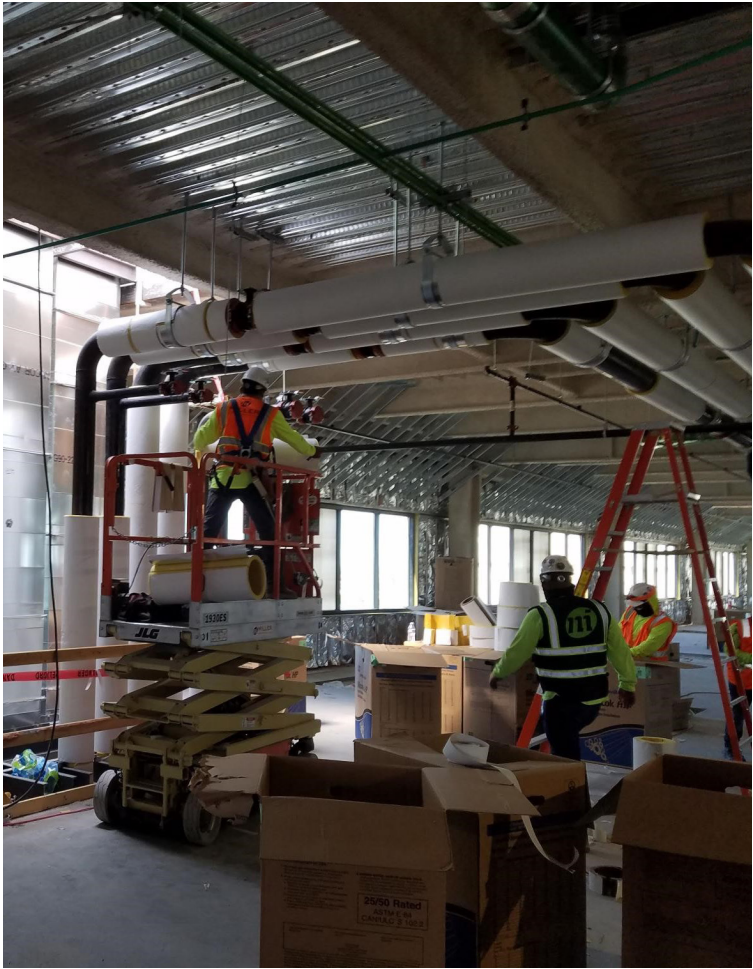
Approximately 125 of the prefabricated wall panels were interior partition walls placed inside the ED. All electrical, plumbing, and medical gas piping required for these walls were installed prior to their arrival on site. This process minimized installation labor and waste, increased productivity, and reduced safety risk and costly site cleanup.

Additionally, the use of prefabricated wall panels allowed for enhanced safety precautions during the COVID-19 pandemic because the nature of prefabrication installation allowed for adequate social distancing and fewer people on-site.











ABOUT THE BERG GROUP

**Size and Capability**

National presence with six offices and 500+ tradespeople nationwide.

**Multi Trade | Multi State**

The Berg Group completed work in 38 states in 2021.

**Safety**

EMR Rating: .89

**Workforce Flexibility**

The Berg Group is licensed and able to staff projects per the requirements of your local market.

**Workforce Efficiency**

The Berg Bundle solution requires less labor force.

**Trusted Partnership**

A preferred partner in the DIRT and Offsite Integrated Structures networks.

